

PRODIGY
PLUS



Modular Remote Low Side Flake & Nugget Ice Machine

Prodigy Plus® Flake & Nugget Ice Machine

Superior performance with every cup.

Now the soft, chewable flake/nugget ice that customers love is available with more innovative technology than ever before. With next-generation diagnostics like AutoAlert™ indicator lights on the new Scotsman Prodigy Plus® flake/nugget ice machines, operators can help ensure superior performance while enjoying maximum efficiency — every day. And with features like advanced ice level control, a small operational footprint and easy-access service from the front panel, Prodigy Plus® flake/nugget ice machines are the smart choice for today's busy food-service environments.

The Prodigy Plus® difference.

- AutoAlert™ indicator lights for better visibility
- Operational footprint among the industry's smallest
- Industry-exclusive QR code instantly connects users to service information and warranty history
- Front-located air filter for more efficient operation
- Self-aligning front panel for easy access to key components
- Smart-Board™ advanced feature module available for additional diagnostic capabilities
- Optional Vari-Smart™ ice level control allows operators to customize ice levels
- Antimicrobial protection guards internal surfaces between cleanings
- A full range of water- and energy-saving features



24 Hour Volume Production

Flake Ice Machine				Nugget Ice Machine			
F1222L		F1522L		N0922L		N1322L	
70°F/21°C 50°F/10°C	Air Water	90°F/32°C 70°F/21°C	70°F/21°C 50°F/10°C	70°F/21°C 50°F/10°C	Air Water	90°F/32°C 70°F/21°C	70°F/21°C 50°F/10°C
1180/535 lb/kg		1000/454 lb/kg	1445/655 lb/kg	1090/494 lb/kg		915/415 lb/kg	1330/605 lb/kg



Modular Bin Options



B948S

Model Number*	Dimensions W" x D" x H"	AHRI Certified Bin Capacity lb/kg	Finish	Ship Weight lb/kg
B948S	48 x 34 x 44**	700/319	Metallic	220/100
BH1100BB-A	48 x 34 x 50**	860/390	SS w/ GBB†	280/127
BH1100SS-A	48 x 34 x 50**	860/390	Stainless Steel	280/127
BH1300BB-A	60 x 34 x 50**	1100/499	SS w/ GBB†	310/140
BH1300SS-A	60 x 34 x 50**	1100/499	Stainless Steel	310/140
BH1600BB-A	60 x 34 x 62**	1755/796	SS w/ GBB†	370/168
BH1600SS-A	60 x 34 x 62**	1755/796	Stainless Steel	370/168

*Contact Scotsman for bin top requirements. **Add 6" Height for bin legs.
† Stainless steel with galvanized back & bottom.



Ice Forms



Flake Ice



Nugget Ice



Certification



Warranty

- 3 years parts and labor on all components.
- Warranty valid in North, South & Central America for commercial installations.
- Contact factory for warranty in other regions.

Scotsman®

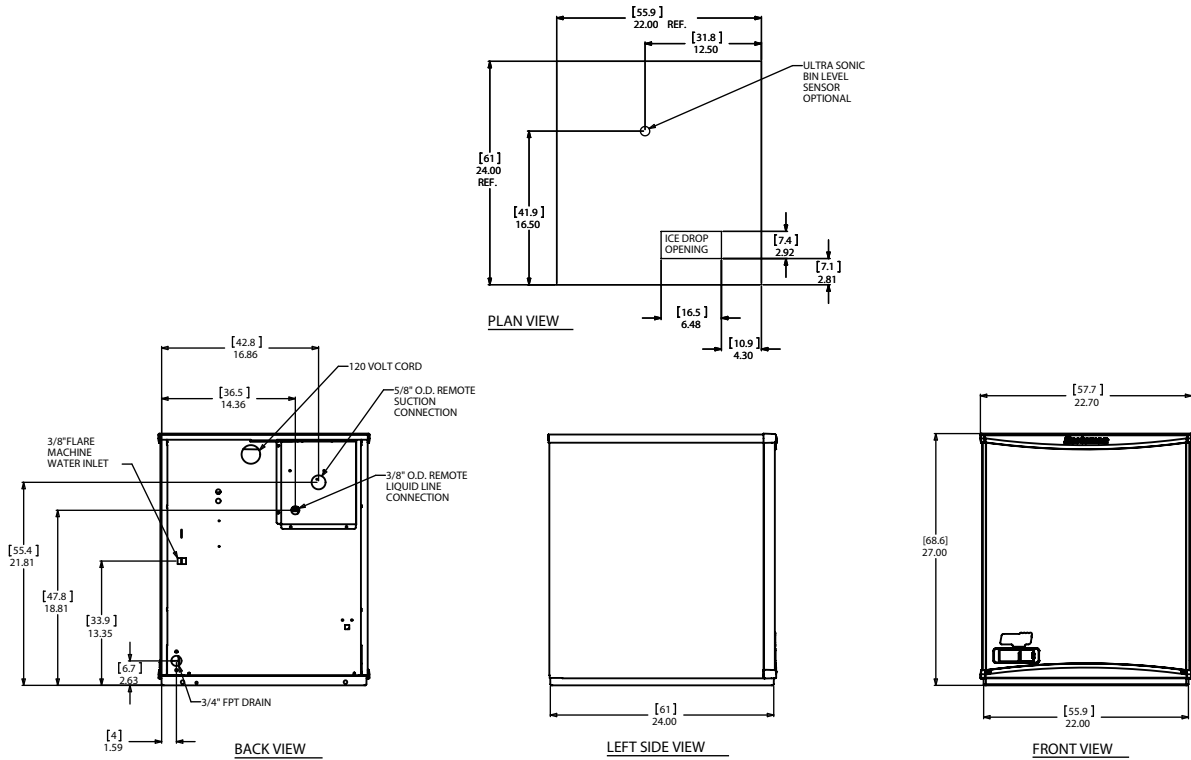
- 101 Corporate Woods Parkway, Vernon Hills, IL 60061 •
- 1-800-SCOTSMAN • Fax: 847-913-9844 • www.scotsman-ice.com • customer.relations@scotsman-ice.com •

Modular Remote Low Side Flake
& Nugget Ice Machine

Modular Remote Low Side Flake & Nugget Ice Machine

Prodigy Plus® Flake & Nugget Ice Machine

Modular Remote Low Side Flake & Nugget Ice Machine



Specifications

Model Number	Condenser Unit	Basic Electrical Volts/Hz/Phase	Max. Fuse Size (amps)	Circuit Wires	Min. Circuit Ampacity	Energy Consumption kWh/100 lb (45.4 kg) 90°F(32°C)/70°F(21°C)	Water Usage Gallons/100 lb (liters/45.4 kg)	
							Potable 90°F(32°C)/70°F(21°C)	Condenser 90°F(32°C)/70°F(21°C)
F1222L-1	Remote Low Side	115/60/1	15	2	Cord	0.82	12.0/45.5	-
F1522L-1	Remote Low Side	115/60/1	15	2	Cord	0.72	12.0/45.5	-
N0922L-1	Remote Low Side	115/60/1	15	2	Cord	0.87	12.0/45.5	-
N1322L-1	Remote Low Side	115/60/1	15	2	Cord	0.73	12.0/45.5	-



All Models

Dimensions (W x D x H):

Unit: 22.9" x 24" x 27"
(58.2 x 61.0 x 68.6 cm)

Shipping Carton: 25.5" x 27.5" x 32.5"
(64.8 x 69.9 x 82.6 cm)

Shipping Weight:

F1222L & N0922L: 217lb / 98kg
F1522L & N1322L: 224lb / 102kg

BTUs per hour: F1222L & N0922L: 6,000
F1522L & N1322L: 7,200

Refrigerant*: R-404A
*Refrigerant must be added at initial start-up.



Accessories

Model Number	Description
KVS	Vari-Smart™ Ice Level Control - Program ice bin levels to match ice needs.
KSBU	Smart-Board™ Advanced Control - Use additional operational data for fast diagnosis.
KSBU-N	Smart-Board™ Advanced Control with Network - Network capable.
NME954-RHS-A/C	Remote condenser package for F1222L & N0922L, 208-203V/60/1
NRTE45	Line set, R-404A, 45 ft. not pre-charged, for NME condenser packages
KPAS	Prodigy Advanced Sustainability Kit - Includes KVS and KSBU - N

Scotsman recommends all ice machines have water filtration. See Scotsman water filter specification sheet for details.



Operating Requirements

	Minimum	Maximum
Air Temperatures	50°F (10°C)	100°F (38°C)
Water Temperatures	40°F (4.4°C)	100°F (38°C)
Remote Cond. Temps	-20°F (-29°C)	120°F (49°C)
Water Pressures	20 PSIG (1.4 bar)	80 PSIG (5.5 bar)
Electrical Voltage	-5%	+10%

Specifications and design are subject to change without notice.

• 101 Corporate Woods Parkway, Vernon Hills, IL 60061 •

• 1-800-SCOTSMAN • Fax: 847-913-9844 • www.scotsman-ice.com • customer.relationships@scotsman-ice.com •

Scotsman®